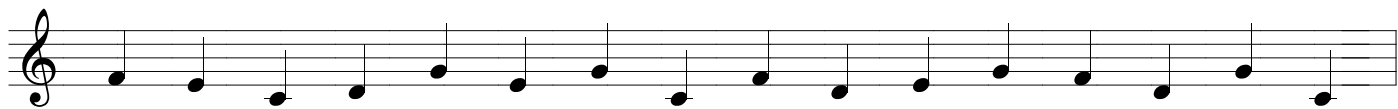
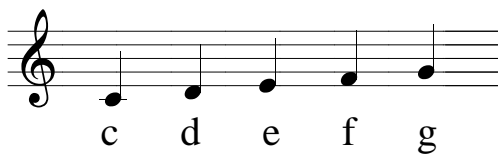
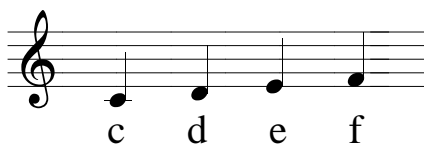
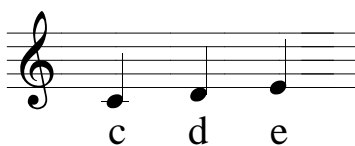
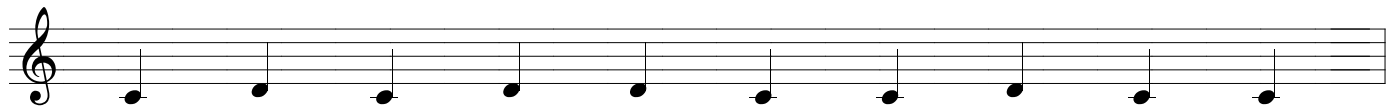
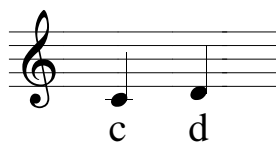
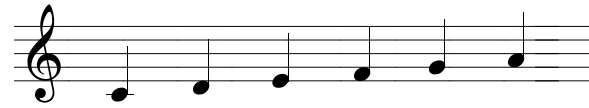


# Notennamen leren van 2 tot 8 noten

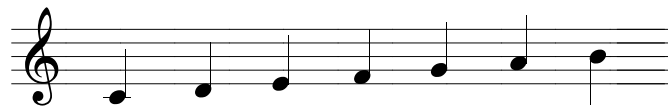




A musical staff in treble clef showing six quarter notes: c, d, e, f, g, a. The notes are positioned on the first six lines of the staff.




A musical staff in treble clef showing a sequence of 15 quarter notes: c, d, e, f, g, a, b, c, d, e, f, g, a, b, c. The notes follow a chromatic scale from C to C.



A musical staff in treble clef showing seven quarter notes: c, d, e, f, g, a, b. The notes are positioned on the first seven lines of the staff.



A musical staff in treble clef showing a sequence of 15 quarter notes: c, d, e, f, g, a, b, c, d, e, f, g, a, b, c. The notes follow a chromatic scale from C to C.



A musical staff in treble clef showing eight quarter notes: c, d, e, f, g, a, b, c. The notes are positioned on the first seven lines and the first space of the staff.



A musical staff in treble clef showing a sequence of 15 quarter notes: c, d, e, f, g, a, b, c, d, e, f, g, a, b, c. The notes follow a chromatic scale from C to C.